

# **Paper title. Font: Arial 20pt. Bold (please do not use all caps)**

**Full First Author<sup>1</sup>, Full Second Author<sup>2,\*</sup> and Full Third Author<sup>3</sup> (Arial 12pt.,  
centred)**

<sup>1</sup>Full affiliation of first author, including country (in English, Arial 10pt.)

<sup>1</sup>Full affiliation of first author, including country (in English, Arial 10pt.)

<sup>1</sup>Full affiliation of first author, including country (in English, Arial 10pt.)

\*Corresponding author

Email addresses: first@email.com, second@email.com, third@email.com

## **Abstract**

The abstract goes here. The abstract should not be more than 300 words and it must clearly indicate the problem, objectives, research methods, results, and conclusions. For more information, please visit the symposium website at [itfnet.org/istf2023](https://itfnet.org/istf2023). (Arial 12 pt.)

**Keywords:** keyword one, *Genus species*, keyword three, keyword four, keyword five

## **1. Introduction (Arial 14pt. bold)**

The main text should follow this font: Arial, 12pt. Paragraphs should single spaced, and alignment is justified. You can add footnotes if you wish<sup>1</sup>.

The main body must be divided into the following chapters: introduction (purpose and objectives); materials and methodology; discussion of findings and results; and conclusions, implications, and recommendations.

### **1.1 In-text citations (Subtitle font: Arial 12pt., bold)**

Citations should follow the APA 7 format. In-text citations should have this form: (surname, year). As an example, follow this for one author (Smith, 2015) and this for two authors (Williams & Martinez, 2013). For three or more authors, include all the names on the first mention (Brown, Sindh, Cruz, & Jones, 2018) but use this format on the subsequent mentions (Brown, *et al.*, 2018).

#### **1.1.1 Sub-subtitle (font: Arial 12pt., bold)**

More text here.

---

<sup>1</sup> Footnotes should be Arial 10pt.

## 2. Tables and Figures (Arial 14pt., bold)

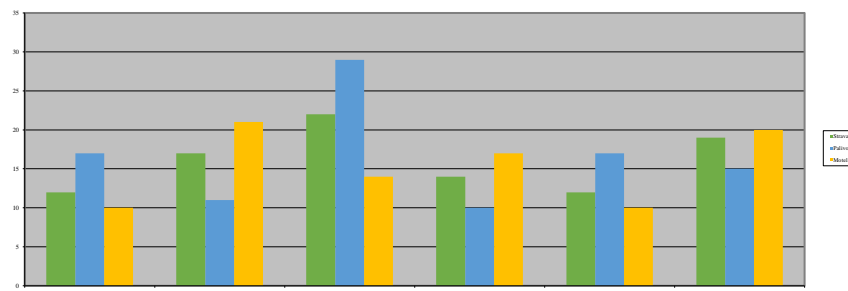
Tables and figures should be numbered and references to them must be in the text (Table 1 or Figure 1).

Table 1: Table description (Arial 10pt., italics)

Arial 10pt. bold	Arial 10pt. bold	Arial 10pt. bold
Arial 10	Arial 10	Arial 10
Arial 10	Arial 10	Arial 10
Arial 10	Arial 10	Arial 10

Source: (Arial 10pt., italics)

Figure 1: Figure description (Arial 10pt., centered, italics)



Source: (Arial 10pt. italics)

## 3. Equations

Equations (refer with: Eq. 1, Eq. 2, etc.) should be center aligned, denoted by numbers in round parentheses. Ideally, they should be transformed using an equation conversion manager. For example:

$$r_i - r_f = \beta_i(r_M - r_f), i = 1, 2, \dots, n \quad (1)$$

## 4. Conclusion (Arial 14pt., bold)

Conclusion here. You may also include recommendations.

## Acknowledgment (Arial 12pt. bold)

Keep acknowledgments succinct.

## References (Arial 14pt., bold)

All in-text citations must be included in the reference list, following the APA 7 style format. For reference, you may visit the [APA website](#) or Purdue Online Writing Lab's guide to the [APA formatting and style guide](#). General formatting are as follows:

### Book

Lastname, F. M. (Year of publication). *Book title*. Publisher. DOI (if available)

### Journal

Lastname, F. M. & Lastname, F.M. (Year of publication). Article Title. *Journal Name*, volume and issue number, inclusive pages. DOI (if available)

### Article or chapter in an edited book

Lastname, F. M., Lastname, F. M., Lastname, F. M., Lastname, F. M. & Lastname, F. M. (Year of publication). Title of chapter. In E. E. Editor & F. F. Editor (Eds.), *Book Title*. (pp. pages of chapter). Publisher. DOI (if available)

### Conference Proceedings

Lastname, F. M., & Lastname, F. M. (Eds.). (Year). *Title of Proceedings*. Publisher. URL (if applicable)

### Online Sources

Lastname, F. M. (Year, Month Date). *Title of page*. Site name. URL

References should be arranged alphabetically, based on the surname of the first author. Sample below:

Augustine, V., Palanichamy, K., & Siddiq, E. (1975). Influence of pH on mutagenic specificity and efficiency of hydroxylamine, hydrazine and ethyl methanesulfonate in two rice types. *Radiation Botany*, 15, 267-277.

Blasco, M., Badenes, M., & Naval, M. (2015). Colchicine-induced polyploidy in loquat (*Eriobotrya japonica* (Thunb.) Lindl.). *Plant Cell Tissue Organ Culture*, 120, 453-461. <https://doi.org/10.1007/s11240-014-0612-3>

Food and Agriculture Organization of the United Nations (FAO). (2011). *Report of the Committee on Commodity Problems, Fifth session of the Intergovernmental Group on Bananas and Tropical Fruits, Yaounde, Cameroon. 3-5 May, 2011*.

Kingsbury, N. (2009). *Hybrid: The History and Science of Plant Breeding*. The University of Chicago Press.

Matra, D.D., Poerwanto, R., Sobir, Higashio, H., & Inoue, E. (2014). Development of simple sequence repeats marker in cultivated mangosteen (*Garcinia mangostana* L.) for their genetic diversity analysis. *Proceedings of the 2014 International Horticultural Congress, 17-22 August 2014, Brisbane, Australia*. International Society for Horticultural Science.

World Health Organization. (n.d.) *Thiourea*. <http://www.inchem.org/documents/icsc/icsc/eics0680.htm>